

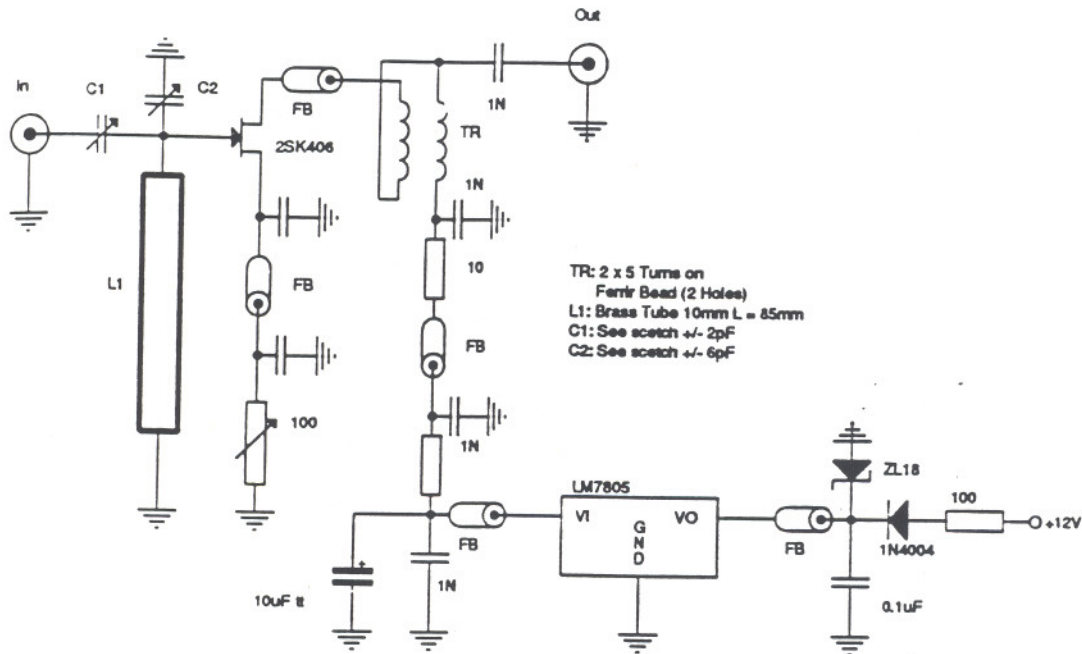
2.42 70cm Cavity Preamp

Hubert Hammerle OE9HHV - June 1988

This Preamp design is a variant on similar designs, published before, but has no commercial made capacitors in the input circuit and is therefore a cheap way to make a low noise Preamp. The input capacitor is made from flashing copper and can be adjusted by means of the Teflon screw. The tuning capacitor is made out of an M6 screw which is screwed in and out of the input coil L1. Grounding of L1 should be done carefully by sharpening the end providing a lowloss ground path.

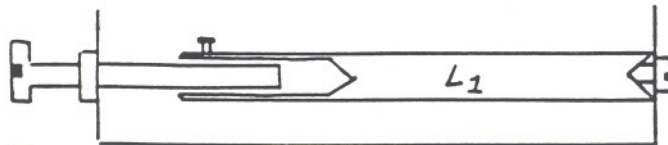
The gate of the Fet (2SK406) is attached to the input line by a M2 screw. Care must taken that the gate screw doesn't touches the tuning screw M6. Mechanical construction details are shown in Figure 2-34.

Figure 2-34: OE9HHV 432 Mhz Preamp



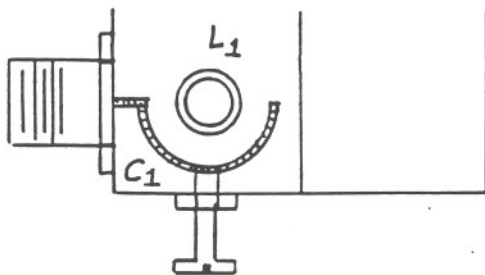
TR: 2 x 5 Turns on Ferrir Bead (2 Holes)
 L1: Brass Tube 10mm L = 85mm
 C1: See scetch +/- 2pF
 C2: See scetch +/- 6pF

M2 screw to fasten gate of SK406



Screw M6

Tube tapered sharply



Teflon screw M4

TR 2 times 5 turns
 bifilar on FB (2 holes)
 L1 brass tube 10mm dia.
 85mm long
 C1 see scetch abt. 2pf
 C2 see scetch abt. 6pf

